

BREMER ECHOES

OUR FOREBEARS PAST YET PRESENT STILL



VOLUME 32 NO 2

JULY 2014

RESEARCH ROOMS & LIBRARY **BELL ARCADE, 7 BELL ST. IPSWICH**

Please address all correspondence to:
The Secretary, P.O. Box 323, IPSWICH Q. 4305
Or email: secretaryipsgen@gmail.com
Website: [http:// ipsgen.googlepages.com](http://ipsgen.googlepages.com)
Editor's email: idbiddy41@gmail.com

[Please check the website for updates](#)

MONTHLY MEETING: SECOND Tuesday of the month at 9.30am [except January] at the Rooms of **Councillor Bruce CASOS Station Rd. Booval**
Shop 2 / 38 Station Rd Booval
Friendly Care Chemist Building

Dues are payable by 30th September.

Subscriptions Single Renewal Membership \$40

Family – 2 members residing at the same address \$50

New Members \$40 + \$10 joining fee

[New] Family – 2 members residing at the same address

\$50 + \$10 joining fee

Journal only subscription \$10

Non-members welcome at Research Library per day \$10

Research undertaken by post – Initial Research Fee \$25 + A4 size SAE

Additional Research fees charged at rate of \$20 per hour or part thereof.

Annual Membership includes postage of Society's magazine

February, July, & November

Magazine will cease to be posted if Membership is not

renewed by 31st December

Out of town members entitled to research on their behalf from Society records.

OPENING HOURS

Monday Wednesday & Thursday 9.30am to 2.30pm

Saturday 9am to 12 noon – Closed Sunday

Closed all Public Holidays

COVER PHOTOGRAPH:

The new Logo of the Society courtesy of Peter Wyman
“Big Hit” Team Bell Arcade Bell St Ipswich

BREMER ECHOES

ISSN 1443-315X

Volume 32 No. 2

July 2014

THE JOURNAL OF THE IPSWICH GENEALOGICAL SOCIETY INC

THE FIRST GENEALOGICAL SOCIETY IN QUEENSLAND 1977



Page 5	Viva Cribb – Her Legacy
Page 6	Upon a Closer Look
Page 8	Religion Established in North Ipswich
Page 16	That Australian Hat – the Akubra
Page 18	Brisbane St. Ipswich 1875
Page 25	Sale of Gogg's Terrace
Page 26	History Queensland AGM - Society Report

We welcome the following new members and wish them well with their research.

John DEVIN; Brian GRANT; John KANE; Laurie DIGNEY; Barbara HODGE; Julie HARRISON; Miriam GITTENS; Leanne HAYES, Michael STEWART, Jeff WILLIAMS, Michelle PEARCE, Simone HART, Leonie KINGI, Edith HENRY, Michelle MURRAY, Ruth HOYE, Esme MANDER, Marg. EARSMAN, Shirley JOWETT

COPYRIGHT: Kindred Societies may reprint information from this magazine (unless marked copyright), provided that full acknowledgement of 'Bremer Echoes' as a source is given.

EDITORIAL: This is the last edition of Bremer Echoes before our AGM on the 9th September. You will find included with this magazine, a membership renewal form and a nomination form for positions on our Management Committee. We really would like to see some new faces, and members are welcome to attend the Monthly Meetings and the AGM. Each year all positions are declared vacant and members are invited to nominate for a position. This year our Secretary will be standing down, and the Society cannot function without one. Please could someone step up and take on this position? We need you.

The Society Library is now connected to the internet. It has taken a long time, but we are happy to report we have joined the digital age, and it should be an asset to researchers.

Thank you to John Graham and John Rossiter who have once more submitted articles for inclusion in this edition, and it does make it easier for me, and is appreciated. All members are invited to add to the content, and also make suggestions as to what they would like to see in the magazine.

A change has come to our Society. Our correspondence and official forms will take on a new look. It was felt that a change was in order, and our friend Peter Wyman a graphic artist from Big Hit Team, has designed our new Logo on the cover of this edition. It retains the essential elements of our original [which has been so familiar for many years], of the large tree, the Cairn and the path. The Committee hopes members approve, and we would like to hear your opinions.

Another change in the Library; to make it easier to find the book you require, they are now grouped in their categories – such as Family Histories, Convicts, Shipping, Mining, Defence Forces – including the World Wars, Cemeteries and Schools to name a few. Please come and see the changes that have been made, and thank you to the Library Team for all their hard work.

The first year in our new home has passed, and we are happy to report an increase in membership, and visits to the Library by researchers. Being in a central location has proved to be beneficial.

Irma Deas - Editor



Mahatma Gandhi's List of Seven Deadly Sins

Wealth without work;	Pleasure without conscience;
Knowledge without character;	Business without morality;
Science without humanity;	Worship without sacrifice;
Politics without principle;	

VIVA CRIBB – HER LEGACY.

Eight years ago on 1st June 2006, we lost one of our original members of the Ipswich Genealogical Society. Viva has been sadly missed by many Ipswich people, being a life member of National Trust Ipswich & West Moreton Branch, and the Ipswich Historical Society, and in her honour, the Local History Room at the Ipswich City Council Library bears her name.

Viva was a quiet lady who never married, and devoted much of her time to collecting and researching not only her own family, but Ipswich history as well. Her collection of books, maps and research material was massive, and Viva always hoped the city would have its own Archives. This has never happened but perhaps one day.

One of four children of Harry and Emily CRIBB, Viva was born on the 31st January 1920, the great grand- daughter of Benjamin CRIBB, one of the founders of Cribb & Foote an early business firm which was an important part of Ipswich for many years. .

Recently while moving the Library, a small note book was found among a number of documents. At every meeting, Viva took copious notes and this was one of her books. A loose page revealed a piece of history. Written in Viva's small script -

"Thurs. Sept 8 1977 – inaugural meeting to form an Ipswich Genealogical Society - 35 people present .

Wed 25 January 1978 – with Betty DONALD and Gareth GILLOTT to my first meeting of Ipswich Genealogical Society and joined (\$3) Name change from Ipswich to Queensland Genealogical Society as no other in Queensland"

"Sat 28 Oct 1978 – to first Annual Genealogical Convention at Dutton Park with Graham and Isobel HISLOP, June WALKER and Beryl WRIGHT present"

Members knew it was 1977 the Ipswich Genealogical Society was formed, but now we have a personal reminder. It pays to check odd pieces of paper – you never know what you might find.

Thank you to a lady who is a part of the history of our Society.

Irma

OTHER PLACES:

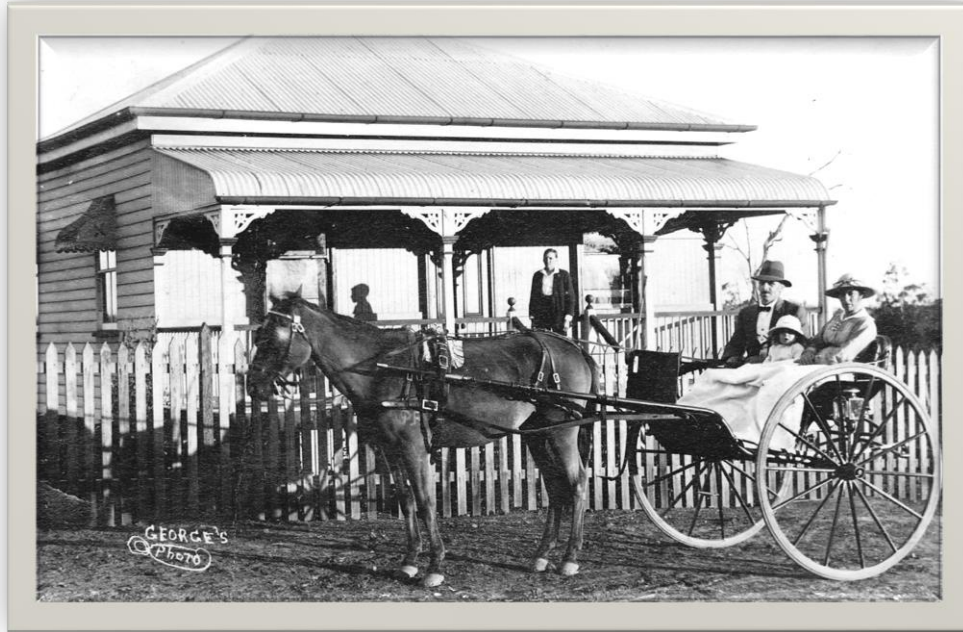
Boonah is situated on what was originally part of "Dugandan" Station, which was first settled by Macquarie McDONALD in August 1844.

The name Boonah comes from the native word for the bloodwood tree.

The Esk Shire was declared a local authority on 11 November 1879, and the Lowood to Esk railway line was opened 9 August 1888, the next stage to Toogoolawah being finished 8 February 1904.

UPON A CLOSER LOOK *John Graham*

While researching my family history I had been given two photos, featuring close family members and their one time horse drawn means of transport. Both photos together with descriptive information were subsequently included a booklet entitled 'The Name Graham'



One photo, known to having been taken in front of the family home at Tivoli Hill estate, now the corner of Holdsworth Road and Ware Street North Ipswich, featured my father John Graham, his wife Mabel and their daughter Ethel in the sulky with John's younger brother James standing on the veranda. The apparent age (estimated to be 3 years) of my half-sister Ethel gives an indication that the photo was taken about 1920. Ethel, now passed on aged 95, recalled that the name of the horse was 'Libby'.

The second photo, initially identified as being taken at an unknown location, is of a young man wearing a butcher's apron sitting in a dray behind a horse whose name is not known.



I had been told that the young man was my uncle James, known as Jim or (Butch) Graham who at one time worked for Moreton's Meats in Brisbane St, the first butcher shop to have a refrigerated display window in Ipswich. Later, Jim operated his own popular butchery on Brisbane Road Booval until the early 1960s



When reviewing the two photos recently I applied digital zoom technology to the scanned image of the second photo and behold, upon a closer look, I immediately recognised the area as being Holdsworth Road, but with only four dwellings, one of which was to eventually become my boyhood home.

This was very apparent to me because of the unique profile of the dwelling and awning of 'Buckley's Shop' which was located directly opposite Paten St where I now reside. The old shop was a place that I vividly recalled from my childhood although it had had ceased operating many years before I was born.

////////////////////////////////////

From Queensland Times 2nd November 1942

Golden Wedding:

HUNTER – HILL: On 2nd November 1892 at the residence of the bride's parents, Pine Mountain, by Rev T. JONES, James youngest son of John HUNTER, "Blinkbonnie", Brassall, to Martha Maud, second daughter of John Thomas HILL, "Gradwell" Pine Mountain.

RELIGION ESTABLISHED IN NORTH IPSWICH

<u>YEAR</u>	<u>RELIGION</u>	<u>HISTORY SNIPPETS</u>
c.1866	Edward Beard's Sabbath School (non-denominational)	The North Ipswich area in the 1860's was like a tent-city with all the workers arriving to set up the newly established Southern and Western Railway system. Edward Beard converted one of the rooms in his home in Lowry Street, into a Sabbath School to bring religious teaching to the children of the area. It was non-denominational - all religions were welcomed. It looks like Mr Beard may have been a Baptist, as in August 1870, he made alterations to his school-house and invited the Rev Thomas Gerrard, Baptist minister in Ipswich, to open the room as a public preaching place, where services would be held each Sunday.
c.1872	Church of England	From this sprang a Church of England group with connections to St Paul's. In the initial stages, Edward Beard loaned them his chapel, but when the group became too large for that location, a move was made to establish their own school-room. Tenders were called in August 1873 for the erection of a Sunday School. On 14 December, 1873, the Bishop of Brisbane opened the building as a Sunday School and a place of public worship. This chapel was on allotment 17 in Lawrence Street. In July 1884, a decision was made to double the size of the existing building. Worley & Whitehead's tender was accepted – 130 pounds. At about this point the building was referred to as "St Thomas's". A petition was sent to the Bishop on 14 May, 1866, which proposed setting up the new "Parish of Ipswich North", and consent was given on 21 May 1886.
14/12/1873		
7/1884	"St Thomas Church"	
14/5/1886	New Parish	
21/5/1886		

11/3/1889	Waterworks Road Sunday School “St George’s Church”	<p>A NEW ERA - Additional land was acquired and a new church measuring 62ft x 41ft , with a height of 30ft, was erected. The opening service, conducted by Bishop Webber, was held on Monday, 11 March, 1889 at 7.30 p m. Eighty years later a brick exterior was added to the building. These walls were blessed by Archbishop Phillip Strong, on 3 August, 1969. By the turn of the century, there was the need to expand into the developing Brassall area. Sunday School was conducted on Mr Woodhouse’s verandah on the corner of Currey Street. Land was purchased and a Mission Hall was opened in mid March 1904. Church services were also held in the hall. During 1922 the building was extended. The dedication of “St George’s” was performed on 12 February, 1923. A large hall was added, with the opening on 19 December, 1933. St George’s Church was de-dedicated on 15 November, 1998. The property was subsequently sold and is now a Muslim Mosque.</p>
3/8/1969		
3/1904		
12/2/1923		
15/11/1998		
1/4/1883	Wesleyan	<p>The Wesleyans started with a service in the new hall in Down Street, which had just been erected by Alex Rollo, as an Assembly Room and recreation venue, later known as the Olympic Hall. The advertisement read: “Members of the Wesleyan Church and all persons not attending any church are cordially invited to attend. A collection will be taken up at the close of the service.” This hall served well until their own church was opened on 19 February, 1888, further up Down Street, beyond the school. Three allotments of land were purchased at a cost of 437 pounds, on which stood two cottages. These cottages were not removed, but were rented as a means of raising revenue to offset the costs.</p>
19/2/1888		

		<p>The wooden structure measuring 48ft by 32ft, and with walls 14ft high, cost about 460 pounds. This church gave good service to its adherents for many years. However, with the formation of the Uniting Church, combining the majority of the Congregational, Methodist and Presbyterian Churches into one, this was one of the buildings made redundant. It is currently owned by the Salvation Army.</p>
<p>6/1886</p> <p>21/9/1886</p> <p>24/7/1887</p> <p>26/ 8/1958</p>	<p>Congregational</p>	<p>In June 1886, the newly arrived Rev Edward Wilson, from Glasgow, commenced Sunday services in Rollo's Hall in Down Street. Sunday School was held in the mornings, but the place being otherwise engaged at 11 o'clock, Rev Wilson was unable to hold general services at that time. This situation later changed and "Rollo's" continued to be their venue. A piece of ground was purchased on 21 September, 1886. Tenders were called in April 1887 by the architect Samuel Shenton. They opened their own church further up Down Street, opposite the State School, on Sunday 24 July, 1887. This building was 55ft long, 33ft wide and the walls were 12ft high. On 2 August a tea-meeting was held in Rollo's Hall when over 400 sat down to tea. They then adjourned up the street to the church where a service was held. This church, along with the manse, shops, and other buildings, was lost in a fire in August 1958. Another church was built on the site, but years later it was sold due to the formation of the Uniting Church.</p>
<p>24/6/1888</p>	<p>Presbyterian Sunday School</p>	<p>An advertisement announced that a Sunday School was to open on 24 June, 1888, in</p>

6/ 4/1898	<p>“St Andrew’s”</p> <p>(new site)</p> <p>“Scots Church”</p>	<p>Rollo’s Hall in Down Street, and all Presbyterian children were invited to attend. (This venue was known as the ‘Olympic Hall’ from 1892.) Land was purchased on the eastern side of Pine Street at the corner of Flint Street, opposite Brown’s Park. A Sunday School building was opened on 6 April, 1898, with a tea-meeting and concert, as a means of raising funds. Following this successful venture it was decided to expand the hall into a church where regular Sunday services could be held. The opening service was on Sunday, 15 April, 1906.</p>
15/4/1906		<p>This land on the corner of Pine and Flint Streets was divided into six allotments and sold at auction, as ‘St Andrew’s Estate’. The building was dismantled and re-erected on new land at the northern end of Down Street. The church was re-opened on 20 July, 1918, by the Moderator of the Presbyterian Church, Rev T T Galloway.</p>
20/7/1918		<p>Another church was erected near the junction of Pine Mountain and Waterworks Roads on 13 April, 1918. Both churches eventually closed as a result of the amalgamation with the Uniting Church. They are both currently the homes of other independent churches.</p>
13/4/1918		
9/8/1889	<p>BRASSALL</p> <p>Wesleyan Methodist</p>	<p>It is reported that a chapel had been erected at Blacksoil in 1865. However, by the mid 1880’s it had fallen into disuse and the decision was made to move it closer to town. It was re-erected on ground at Brassall on Pine Mountain Road opposite the Brassall School. The opening celebrations included the customary tea-meeting on Friday evening the 9 August, 1889. Despite the rain, the building was crowded and three sittings were provided to accommodate the guests. With the low lying ground, the church was inundated in the 1893 flood.</p>

28/10/1903		With the closure of the cemetery reserve and the rifle range, ground became available as part of the Brassall Park Estate. In October, 1903, the church representatives purchased at auction, allotment 20 of section 59, measuring 3 roods and 22 perches for 15 pounds. The church was then moved further back onto the higher ground, on the corner of Parcell and Pommer Streets – the site of the current church property. A new church was opened in April 1913 close to the old building which was then used as the hall. Further changes and additions have been made over the years.
20/4/1913		
11/8/1912	Roman Catholic	A meeting was held at Frank Hefferan's residence in Albert Street, on 11 August, 1912, re a proposed Catholic church and school to be erected in the Liverpool Estate area of North Ipswich, to cater for the increased population in this area. Dedication and blessing of this building was performed by Archbishop Duhig on 6 July 1913. This church, standing on high stumps, was in Albert Street. This became a separate parish on 1 January, 1930. During the war it was used as a first aid post with the school transferred to the hall on Raymonds Hill.
6/7/1913	"St Joseph's"	In December 1947, the church was transported to the top of Raymonds Hill, making it the highest church in Ipswich. It was remodelled, by adding a brick exterior. A considerable amount of the materials used in the internal additions such as the communion rails, the pulpit, a marble fire-place, cedar and silky-oak, were recycled from 'Brynhyfryd' (Lewis Thomas's castle which stood on Blackstone Hill). The centre pieces in the front fence were also from the castle.
12/1947	(New site)	It was blessed and re-opened by Archbishop Duhig on 12 November, 1950. Other changes
12/11/1950		

		have since been made, but most of the internal building structure dates back to the original construction from 1913.
c. 1864	Blacksoil Wesleyan	At the end of 1861 there were only five families living at Blacksoil – John Thomas, Jacob Hines, Joseph Gibson, Patrick Kelly, and Thomas Peters. Within a couple of years other families built in the district – James Roper, Gottlieb Spresser, snr, Jacob Egbert, William Baker, Charles Munson, John Bloom, Richard Browning and the Butterfields.
	John Thomas's Barn	In 1864 these families felt the need for a suitable building in which they could conduct Sunday services. At a meeting, John Thomas offered the use of his barn till such time as they were able to build a suitable church. The Rev Gardiner of the Wesleyan Church in Ipswich was approached and he agreed to hold services on a Sunday afternoon. When he was not available, he arranged for a local preacher to attend on his behalf. After a few years the barn become too small for comfort and the decision was made to build a church on land given by John Thomas. The land was surveyed, free of charge, by Enock Bostock and the tender of Worley & Whitehead was accepted to build the church. A working bee cleared the land, split posts and rails and erected fences to enclose the land. The church was erected free of debt.
4/1865	Church opened	The opening service has been reported as being conducted by Rev Gardiner, who was assisted by Joseph Hargreaves, both from Ipswich, in April 1865. Anniversary services were advertised in 1870 and 1871. As well as being used as a church and Sunday School, it also served as a day school for children and a night school for adults.

9/8/1889	Church moved to Brassall	The church operated for about twenty years, but by about the mid 1880's it fell into disuse. It was dismantled and moved to Brassall where it was re-erected as the Brassall Wesleyan Methodist Church which was opened on 9 th August, 1889.
----------	---------------------------------	--

(John ROSSITER has extracted this information from articles in the QT and other sources.)

////////////////////////////////////

The following poem is said to have been come from a Canadian lady Mrs Joyce Houghton, and perhaps reflects the thoughts of some of our older readers.

NEW STYLE SERVICES

They have brought you up to date Lord, down at St Cecilia's,
 They have pensioned off the organ and they're praising with guitars.
 They have done it for the young ones – we want to draw them in,
 But I do wish they could worship without making such a din.
 For I'm growing rather deaf, Lord, and when there's all that noise,
 It gets so very hard Lord, to hear your loving voice.
 They have written brand new hymns, Lord, with tunes that I don't know,
 So I hardly ever sing now – though I did love singing so.
 They are very go-ahead Lord, they are doing Series Three,
 But the words are not as beautiful as the others used to be.
 They have modernised the Bible and the Lord's Prayer and the Creed,
 When the old ones were so perfect, that they filled my every need;
 My mind is not quite as agile as it was some years ago,
 And I miss the age old beauty of the words I used to know.
 It's very clear to me Lord, I've overstayed my time,
 I don't take to change as I did Lord when I was in my prime.
 But it can't be very long before I'm called above,
 And I know I'll find you there Lord and glory in your love.
 Till then I'll stick it out here, though it's not the same for me,
 But while others call you "You", Lord, do mind if I say "Thee".

MAGAZINES AND E-JOURNALS

Don't overlook the Journals and Magazines of Family History or Historical Societies as a Research Resource

The Journals/Magazines your Society exchanges with other societies are a great resource for your Family History Research. These journals like our Bremer Echoes are compiled by their own Society Members and contain information and stories, both of past and current eras, about the people and places of their districts. You can learn about the local lifestyle of the past and the people who were involved. You may even find a link to your own ancestors or a Web Address to take your research in a new direction.

In the past all Magazines were in printed format and many still come to us in that way, but the Internet has made it easy to send journals by email and these have come to be called e-journals. More Societies are now using this method of distribution, as we do with Bremer Echoes. All printed Journals can be borrowed by Members for a period of two weeks.

E-journals have been recorded on CD to the end of 2013 and now in 2014, are downloaded direct to the Society's Computers. Members may have access to these journals by bringing their own USB stick and request help from the Research Assistant to download to their USB Stick, the selected e-journal from CD or Computer. Read and enjoy learning more of the people and places in your family's past.

Audrey Dillon



THAT AUSTRALIAN HAT – THE AKUBRA

From 'The Akubra Hat' Jill Bowen 1988 Kevin Weldon Production.

The name Akubra is an aboriginal word for head covering and has been in use for many years, but it is not known from which tribe it came.

Benjamin DUNKERLEY who had learnt the hat trade in Cheshire, where he was born in 1840, had spent time in Germany before arriving in Tasmania about 1874. With his wife and children, Benjamin lived in Hobart where he invented a machine for cutting the fur from rabbit skin used in the manufacturing process, making it much easier than the time consuming of



cutting by hand used previously. In the late 1880's he moved to Sydney and set up a small hat factory in Crown Street Surry Hills

Benjamin went into partnership with Arthur P. STEWART another Sydney hat and cap maker in York St, and was soon joined by Stephen KEIR who was born in Lancashire in 1879, and arrived in Sydney in 1902. Stephen became Benjamin's son-in-law when he married Ada in 1905, and they lived in Burwood where four children were born – in 1906, Herbert, 1911 Stephen, Ronald 1913 and Beryl 1916.

Stephen Keir

In 1911 the firm became Dunkerley Hat Mills Ltd., but after the death of partner Arthur STEWART in 1925, all hats produced were branded 'Akubra'.

The mill, as well as other companies produced slouch hats for the servicemen in World War 1. That hat had been designed in 1885 by Colonel Tom PRICE and was originally worn with the right-hand side turned up, but by 1890 all servicemen turned up the left hand side, and it is still the same today. The slouch hats were again manufactured by Dunkerley's for servicemen during World War 2, and then over the years for other conflicts and for National Service Men from the 1950's.

Benjamin died in 1918, and the business was carried on by his son-in-law Stephen KEIR and wife Ada, with a move to Bourke St Waterloo. During the 1920's hundreds of people worked for Dunkerley's and it appears it was an enjoyable place to work, with annual staff picnics, cricket teams which played in matches at Moore Park each Saturday, and even the Akubra Provident Society which was set up to provide sick pay to employees who had 15 years - service with the company.

The three KEIR brothers Herbert, Stephen and Ronald all joined the family business, but all had to start at the bottom and learn every aspect, and when their father Stephen retired in 1952, Herbert became Managing Director. It was on 11th November 1957 that Stephen [snr] died.

It may not be well known, but Dunkerleys were licensed to manufacture American Stetsons in Australia from the early 1950s.

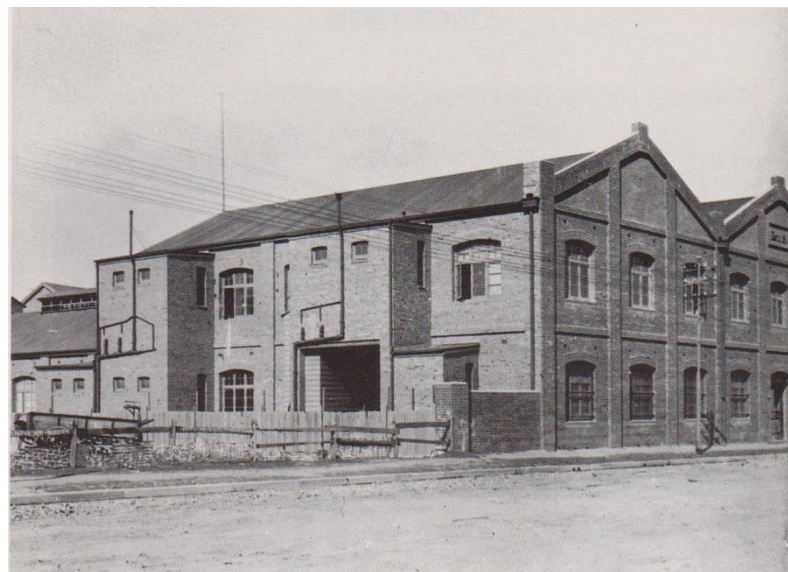
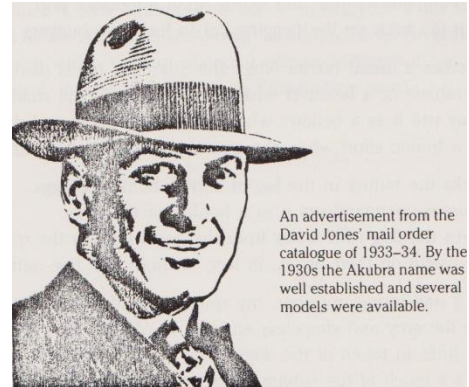
The wearing of hats gradually fell out of favour, especially in the city, but farmers and graziers still required hats for outdoors so the demand continued although at a reduced rate.

In 1972 the Bourke St property was taken over by Mainline Corporation, and eventually the factory machinery was moved to Kempsey on the New South Wales mid-north coast. Some of the employees moved with the factory and the first hats were produced in October 1974.

At the 1984 Olympic Games in Los Angeles, the Australian Team wore 'Aussie Gold' Akubras and at the Commonwealth Games in Brisbane in 1986 the Australians wore 'Snowy River' style hats.

It takes the fur from about a dozen rabbits to make a country style hat and wild Australian rabbit fur has been found to be ideal. The company in 1986 – 1987 manufactured and sold 300,000 Akubras.

Today the Akubra hats are still manufactured at Kempsey.



Akubra Factory Waterloo Sydney 1919 to 1972

Extract from QT 22 February 1957

BRISBANE STREET IPSWICH IN THE YEAR 1875 – by Sydney May

An iron peg was placed in the centre of a square, formed by the intersection of Brisbane and Nicholas Streets, and “*from this peg all mileage was computed*”. A similar peg was on the footpath on the corner of Wharf and Brisbane Streets, near Molloy’s shop. On the corner of Chermside Road and Brisbane Streets East Ipswich (which perhaps was once called New York) there was a wooden mile post marked 1M.

Coming from Brisbane, Limestone Hill was too steep for bullock wagons, and teamsters made a detour around the knoll and re-joined the road at Milford Street. All this area down to the Bremer River was parkland, and the area of the once used limekilns, was filled in by Mr W. Turley when he was in charge of the parks. When the kiln was operating, oyster shells from Cleveland were brought to Ipswich to mix with the limestone, and some of this lime was used in building the Ipswich Post Office.

The building on the corner of Milford and Brisbane Streets was a parks office, storage for picks and shovels, and from there, the land was vacant and used for the circus when it came to town. The next building was the Ulster Hotel, with hitching posts for horses, and a humpy next door.

Between this and Devil’s Gully, “Daddy Martin’s” sold school material, and Laughter’s Chemist shop were the next buildings, followed by Phillip’s, a coach builder, Hoare’s the basket maker and Solomon’s humpy. In 1875, the river tides rose as far as the railway bridge, and from there to Brisbane Street, there was a series of deep waterholes, where schoolboys enjoyed catching fish, mostly mullet. The River Road spanned the gully with a wooden bridge.

A boot maker, Brennicke’s well known for his use of 10 year old matured leather, was on the corner of Wharf Street, with Molloy’s Shop and the home of Michael Real, the lawyer O’Sullivan, Johnson the “*de-luxe grocer on the site of Robson’s the Grande Hotel which had remained vacant for 14 years and sold for £1,000*”.

On the East Street corner, where the National Bank stands [*in 1957*] there was a hotel which burnt down in 1873. There were a few humpies between the corner and Pettigrew General Merchant, which was destroyed by fire in 1877. The Australian Stock Bank later incorporated with the Bank of New south Wales, was on the corner of Bell Street, and opposite was the biggest store in Ipswich – Cribb & Foote and from there, vacant land until the Bank of Australasia, this being partly built with wooden slabs.

The chemist Walter Taylor, and a shop owned by Jimmy O’Dea with a passage leading to a back entrance to Lyon’s the watchmaker, were next, and on the Nicholas Street corner was Greenham & Bennett’s drapery and grocery store, a one story shingle roof building, with Given the Jeweller on the other

corner. *“An old clock from this building made by J.B. Muncaster, England, and operated by a chain and weight, a big cumbersome affair, is well worth inspection in Molloy’s Shop corner Wharf and Brisbane Streets.”*

Macfarlane’s grocery shop, Brady’s building, Heeney another chemist and the North Star Hotel for many years run by the McGrath family, were in this block.

After crossing Ellenborough Street, a black smith Sweeney had his business, with Granny Moss who sold fruit and lollies next to him. A two storey brick building – McDonald’s – and next on the spot that was later to be Goleby’s was a wooden shop.



Brisbane Street
looking towards
Grammar School,
Ipswich, 1887
Photograph with
kind permission
Ipswich Historical
Society Courtesy
Picture Ipswich

Another
grocery store,
Shand’s, and
Wright’s
butchery and
McLean’s hotel
which was below

street level came next. There was a vacant area followed by Haenke’s, Platz and Herbert, Billy Quinn the saddler, Harvey the wheelwright and wagon builder, then Siemon the produce merchant and the cordial factory of Ferguson were found before the Harp O’Erin Hotel with its shingle roof [later Metropole].

Michael Real owned the next house and then there were two cottages; in one of them lived the first postal delivery employee. *[The other tenant was not mentioned Ed.]* Tommy de Long who was a cook at Whitehouses’ Café had the next property, and that was before you came to The Cutting. *[This is about where the City View Hotel is now. Ed.]*

At the end of the article, Sydney May states that the information was given to him by William Harper, who had a furniture-shop in Brisbane Street and was 96 years old in 1957. No mention is made of the businesses and owners of property on the other side of Brisbane Street.

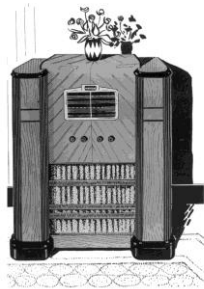
SNIPPETS:

Extract from Family Tree Magazine UK Nov 1999

Documentary Photography Archives – Manchester UK The Documentary Photography Archive in the city of Manchester [UK] specializes in photography and photographers who were in the north west of England. In 1999 when this article appeared, web pages and the internet were just beginning, and now it is possible to “look it up on the web”,

Many of the images have been copied from old family albums, and therefore could contain much that would help with family research. If you are interested, google Documentary Photography Archives UK, or the address was stated as: c/o 7 Towncroft Lane, Bolton Lancs BL1 5EW

STATE ARCHIVES FREE TAXI SERVICE: If you would like to visit the Queensland State Archives at Runcorn and find it difficult to get there, a free taxi service runs from Fruitgrove Railway Station on Tuesdays. Bookings are essential please ring the QSA on 07 3131 7777, and for more information check the web site for details- <http://www.archives.qld.gov.au/findus.asp>



THE LONDON GAZETTE:

The London Gazette is the official newspaper of record produced for the British Government. It contains a wealth of information for the family historians, who are encouraged to make use of the online services provided free of charge. Some of the information listed below, may be found at:

<http://www.london-gazette.co.uk/search>

Honours and Awards both civil and military:

Appointments to civil service jobs including the post office:

Corporate insolvencies:

Changes of name:

Naturalisations:

Personal Bankruptcies:

Notification of deceased's estates.

A FINE STATE OF AFFAIRS COMING TO QUEENSLAND IN 1861

The following letters were found after the passing of both Graham and Isobel HISLOP last year. Thank you to their son Ian who has passed to our Society numerous letters, newspaper clippings and books which had been collected over many years. [Isabella and Mary [Polly] MAUGHAN were two young ladies who came to Queensland on the "Jessie Munn" in 1861.]

..... Emigration Board, 8 Park St., Westminster 26th April 1862. *[The first word of the address cannot be identified]*

Sir,

I have the honour to present herewith, for the information of the Governor, a copy of a letter which we have today received from Messers Charles Story and Geo. W. Green, on the subject of complaints which have reached them of the condition of the Female Emigrant Depot, Brisbane; and the treatment experienced on the first day of arrival there of the emigrants by the "Jessie Munn"

We have thought it right at once to put you in possession of this communication, as should these complaints be well founded, and continue, they will as Messers Story and Green observe, on becoming generally known to the public here, injuriously affect the Emigration to the Colony.

I have the honour to be, Sir,

Your Obedient Servant,

S. Walcott *[hard to read]*

The Honourable
The Colonial Secretary,
..... *[indistinct]*
Queensland

14 Hewgill Terrace
Newcastle on Tyne 25th April 1862 ??

To The Honourable, H.M. Commissioner of Emigration

Gentlemen,

Two of our friends having sailed in October last by the "Jessie Munn" chartered by your Honourable Board for the conveyance of Emigrants to Moreton Bay, Queensland, and having a special interest in their welfare, we need scarcely apologise for laying the following facts before you, feeling convinced that they only need to be properly represented to secure an investigation and a remedy.

Our friends Misses Mary and Isabella Maughan sisters went out under the usual conditions as advertised by your honourable board. Since their arrival at

Moreton Bay on the 26th January last, we have received letters from them, and from the Brisbane papers, extracts, as exhibiting the disgraceful state of the Depot at which they were received.

We need scarcely say that were such facts made public in the United Kingdom it would very seriously affect the tide of emigration to that part and considerably lessen the public faith in the truths of the statements made by, as well as destroy the confidence hitherto reposed in the management of the Government and their officials at Moreton Bay.

Extract from newspaper No. 1

A gentleman called at our office late last night [at nearly 12 o'clock] on his return from the stores set apart for the use of the immigrants per "Jessie Munn". He states that he found the shed in which the single females were, in a revolting state with no one to assist Mrs Morphy [*sic*] the Matron who seemed overpowered in the circumstances in which she was placed. On entering the shed he found it little else than another black hole of Calcutta crowded with 130 single females, in a suffocating atmosphere crying "water, water, bread, bread, we have had nothing to eat since morning. Seeing the state of the matters he at once proceeded to Mr Soalers [?] who supplied water and tea as soon as they could be prepared; another party went in search of bread and procured about 30 loaves, while Mrs Sonter sent off all she had; her son and others about the hotel, assisting to the utmost to supply the wants of the famishing women. He states also it was necessary to procure the protection of the police as some ruffians from the outside had battered in part of the building and created an alarm which made matters still worse. When he left most of the females had been supplied with bread and tea, and the police were on duty, but the whole arrangement he described as a disgrace to a civilised community.

Extract No. 2

The information given by Mrs L. Knox, the Matron respecting the conduct of the passengers was very gratifying and we were much pleased with the cleanliness and order of everything on board; only one matter which caused a feeling of disappointment being the fact that the married couples were in one compartment without screens or curtains. This we hope will be avoided in the future arrangements of the emigrant vessels; better to limit the numbers than encourage any system might be repulsive to the feelings of the passengers.

Extract from Isabella Maughan's letter dated February 10th.

Separate sheet of paper with no heading

I must tell you about the Depot; "it was not as good as a barn, no windows in it neither was it floored, merely bare ground. It had two large doors, and contained two tables and forms. There were 32 beds for 132 girls, but the worst of it was

they drove us in like many cattle and locked us up. Of course we could not get anything to eat or drink; we had nothing since breakfast”

Our friends unfortunately did not send us the names of the Brisbane papers from which the extracts were taken but we hold the printed slips as cut from them, which can be forwarded to your honourable board if desired.

We are

Charles Story

George W Green

THE GRAND ESSENTIALS OF HAPPINESS;

Something to do; Something to love; Something to hope for.

Ipswich Observer 18th May 1878

ST PAUL'S CHURCH MEETING.

Changes were made to services at St Paul's Church after a meeting chaired by Rev J.H.L. ZILLMANN, when it was moved by Mr KENDALL and seconded by Mr WORLEY that at services in the church in the future, after the reading of the Psalms, the vacant seats be considered open to strangers, and the verger be asked to fill them accordingly.

It was decided that the movement of persons was less distracting during the singing of the Psalms than during the Lessons.

Mr KENDALL also moved that all dogs be kept out of the church, to preserve 'good order and decorum'.

Mr G.H. WILSON moved that no corpses be allowed to be brought to the church, as there was a mortuary chapel at the cemetery, and the motion was adopted that the funeral service be held in the chapel.

The retiring officers, G.H. WILSON, R. GILL and A.W. DARVELL were re-elected to the positions on the parochial council. After some discussion it was decided that no alteration be made to the auditing of the church accounts or the preparation of the balance sheet, as the acting-churchwardens were accustomed to prepare in accordance with the system in place.

The meeting was terminated.

Queensland Times 4th August 1866

LATEST INTELLIGENCE
(From our own correspondents)

Sydney.

The Bill for prohibiting city interments has passed the Assembly.

The produce sales were dull, and tallow is £2 lower.

The Government have negotiated a loan with the Savings Bank at seven percent.

Bank shares have further declined.

Sailed – City of Melbourne, with Netherby's passengers.

Melbourne

Dr SHEIL's consecration takes place on the 15th.

Sugar is £3 lower, and candles have fallen 2d.

Mr BINDON and Mr M'Gregor, the new Ministers have been re-elected unopposed.

The Tasmanian Parliament was opened on Tuesday; the speech was unimportant.

**SOME RESOURCES AVAILABLE FOR RESEARCH
OF MINES AND MINE WORKERS**

The following four are original ledgers from mines in the local area.

REGISTERED MINE MANAGEMENT LISTING

INDEX OF MINERS, THEIR POSITION AND THE MINES THEY
WORKED

BONNIE DUNDEE COAL Co. Ltd. MINERS AND WAGES PAID 1916

REGISTERED MINE MANAGEMENT LISTING - c1900 to 1960

Publications

Coal in Queensland – The First 50 Years *Professor Whitmore*

Coal in Queensland – Federation to 1920 *Professor Whitmore*

No Easy Field. Ipswich Coalmining 1920 - 2000

Index to Mining Leases – Supplement to the Microfiche

History of the Miner's Federation

Miners in the 1970's

Coal Industry in Queensland Volume 1

Helping Our Mates 100years – Mines Rescue

Due to circumstances beyond our control, we no longer have the Mine Workers' Muster forms available for research. We do have an Index which gives the information, from the forms. The Society apologizes for the loss of this valuable resource.

NOAH'S ARK

Everything I need to know, I learned from Noah's Ark

ONE: Don't miss the boat.

TWO: Remember that we are all in the same boat!

THREE: Plan ahead. It wasn't raining when Noah built the Ark.

FOUR: Stay fit. When you're 60 years old, someone may ask you to do something really big.

FIVE: Don't listen to critics; just get on with the job that needs to be done.

SIX: Build your future on high ground.

SEVEN: For safety's sake, travel in pairs.

EIGHT: Speed isn't always an advantage. The snails were on board with the cheetahs.

NINE: When you're stressed, float awhile.

TEN: Remember, the Ark was built by amateurs; the Titanic by professionals.

Extract - Queensland Times 11th March 1936

THE SALE OF GOGGS TERRACE

The houses on Goggs Terrace in what is now West Ipswich, were built in the 1850's and very rarely were any of the five tenements vacant. For 78 years they were a part of the community Little Ipswich, but when offered for sale in 1936, no buyer was found.

Little is known about GOGGS, and it thought he did not live in Ipswich, but had extensive holdings in the areas now known as Darra and Wacol. The Terrace was over 130feet in length with each tenement having four rooms and two above in the attic. The windows were much larger than those of most buildings of the time, and gave the tenants a feeling of spaciousness as most other dwellings had cramped little rooms with little light and ventilation.

In 1858, the area was the busy hub of Ipswich, with a place for the passing travellers who stayed overnight, on their way west to the Darling Downs and beyond, as well as accommodation for the workers who had made their home in this growing town. Coaches ran from this point to Wivenhoe and Cressbrook, Esk then on to Nanango, and stables and paddocks for the coach horses were close by. The Terrace afforded a great place to view the passing traffic and the rallies which always took place at election time. In 1936 a foundation stone was still in evidence, on a tall arch with the words:

BRIDGET GOGGS
TERRACE
1858

HISTORY QUEENSLAND AGM 17TH May 2014**IPSWICH GENEALOGICAL SOCIETY Inc REPORT**

Irma Deas, President of the Ipswich Genealogical Society on behalf of members, thank you for the opportunity to present this report, and also for the phone calls and emails of support from other Societies over the difficulties we experienced in the last couple of years.

It is just one year since we moved to premises in the Ipswich CBD, and it has been to our advantage as our membership has grown considerably in that time. A number of old members have re-joined which is pleasing, and gradually we hope to get more of these members to participate in the day to day running of our Society. It seems to be the same in every Society where it is the 'willing few' who do most of the work. The problem being, 'those few' are getting older, and we look towards members who are younger to lend a helping hand. The Society now has a presence in the Ipswich City Council Library each Wednesday morning from 10am to 12 noon, -"Genies in Residence". This is an initiative of the City Council and we acknowledge their help and support, even though they could not supply accommodation their help has been invaluable in other ways, especially our Patron Councillor Bruce Casas and his office staff.

In the last week we have been connected to the internet which will help with research, and our web page is kept updated with all the work being done by our very capable Secretary Audrey Dillon who is with me today. Also going into the digital age is the sending of the Society magazine by email. This is certainly a saving on postage, and as it comes through in colour more pleasing to the eye. I sometimes wonder do members actually read it this way or, is it 'I will read that later' and maybe 'later' never comes? Personally I like to have a book which I can pick up anytime and read. I know it can be printed out at home, or the interesting bits extracted, but how often do the good intentions never eventuate? It is a personal preference – shows my age.

A huge amount of work has been done by our Library Team updating our data bases from Access to Excel making them more user friendly. The indexes of newspaper BDM's, and collection of Weddings and Anniversaries and Obituaries and Biography reports, and BDM Certificates, have grown, many from the 1800's. These are a valuable asset with some of these records being available nowhere else. We now have a more up to date cemetery listing for the Ipswich district, and are able to provide photographs of many of the graves and headstones.

The Ipswich Genealogical Society members extend best wishes to other member Societies and hope the coming year will prove beneficial to us all.

Irma Deas President 17th May 2014

PUBLICATIONS AVAILABLE

Write to the Secretary PO Box 323, Ipswich Q 4305

BIRTH, DEATH & MARRIAGE EXTRACTS 1858 – 1865 from The North Australian & Ipswich General Advertiser. \$10 + \$10.00 P&P in Australia

CITIZENS OF IPSWICH - 1904 Names of Ipswich citizens in 1904 taken from Available Church Records - Baptisms, Deaths and Marriages, Electoral Rolls, Post Office Directory, Available School Rolls, Queensland Times Reports.
\$10 + \$10.00 P&P in Australia

IPSWICH & DISTRICT PIONEER REGISTER pre 1914 - Pioneer Families of the Ipswich, Gatton, Laidley, Boonah and Esk areas of Queensland.
Please note prices: Set Volumes 1 & 2 - \$10 + \$15 P&P in Australia

INDEX TO IPSWICH GENERAL CEMETERY 1851 - 1992 & Columbarium Wall 1949 - 1992. One microfiche \$6 includes postage in Australia. This index contains over 15,000 entries with details of name, age and date of death.

INDEX TO OATHS OF ALLEGIANCE (held by the Society). These are relating to pioneers of the Ipswich district. \$3 + \$2.00 postage in Australia

JUBILEE HISTORY OF IPSWICH 1910 Commemorates the Jubilee of Municipal Government. Reproduced on CD from the original 157 page book
\$19.50 + \$4.00 p&p

.....

Bremer Echoes can now be sent electronically, and if you would be willing to accept it in this form, and do not receive it this way at present, please contact the Society.

The IPSWICH GENEALOGICAL SOCIETY INC. does not accept responsibility for opinions expressed in this magazine.

MANAGEMENT COMMITTEE 2013 - 2014

Patron	Ipswich City Councillor Bruce CASOS
President	Irma DEAS 3282.3067
Vice President	Claire JULER 3281.3524
General Secretary	Audrey DILLON 5467.3215
Treasurer	Eric CLARKE 3201.4192
Librarian	Gloria TUNSTALL
Magazine Editor	Irma DEAS 3282.3067 email: idbiddy41@gmail.com
Committee Members	Yolande JAMES 3202.1954 Ashleigh STRATTON 5464.3887 Beth FORSYTH 3201.6889
Research Officer	Angela YARHAM 3288.8088
Membership Secretary	Angela YARHAM 3288.8088
Roster Co-ordinator	Claire JULER 3281.3524
Scrapbook Compiler BD&M and General News	Judy-Ann SMITH 3202.3597



Do you need: Screen printing on that special T Shirt?
 Your name on a garment?
 A set of towels with the names of the bride and
 groom, for a special gift?
 Help to design a new logo?

Call and visit Peter Wyman at -

BIG HIT TEAM Shop 7, Bell Arcade, Bell Street, Ipswich 3282 1108

*With Thanks to the office of our Patron, Councillor Bruce Casas
for assistance in the printing of Bremer Echoes.*